

W a l d
H o t e l
STUTTGART



HELLO, GUTEN TAG, BONJOUR, BUENOS DÍAS ...



...and welcome!

Over the next few pages, we would like to invite you to accompany us on a walk around Waldhotel Stuttgart. A whole day long, from breakfast after a restful night's sleep to drawing the day to an atmospheric close in front of the open fireplace in our hotel bar. Get to know us, and you will see that this is a very special place.

The Waldhotel can look back over a long tradition as a place of recuperation – this is hardly surprising in view of its breathtaking location amidst landscaped grounds directly at the edge of the Degerloch forest. Back in the 1920s, it was a popular rest home before being transformed into a guest house in the 1950s.

In 2009, it was reopened as a four-star private hotel after undergoing extensive refurbishment. It invites its guests into an ambience characterised by a successful combination of the modern and the traditional. Great value has been attached to high-quality materials and beautiful design. All of the rooms within our establishment also boast a uniform art concept. The rooms and suites offer the comfort and luxury that make your stay a pleasure – you will feel completely at home.

We ensure hospitality, warmth and a love of detail in a very personal manner at the Waldhotel – being awarded the title of four-star superior hotel in November 2012 has inspired us to continue offering you a very special level of service.

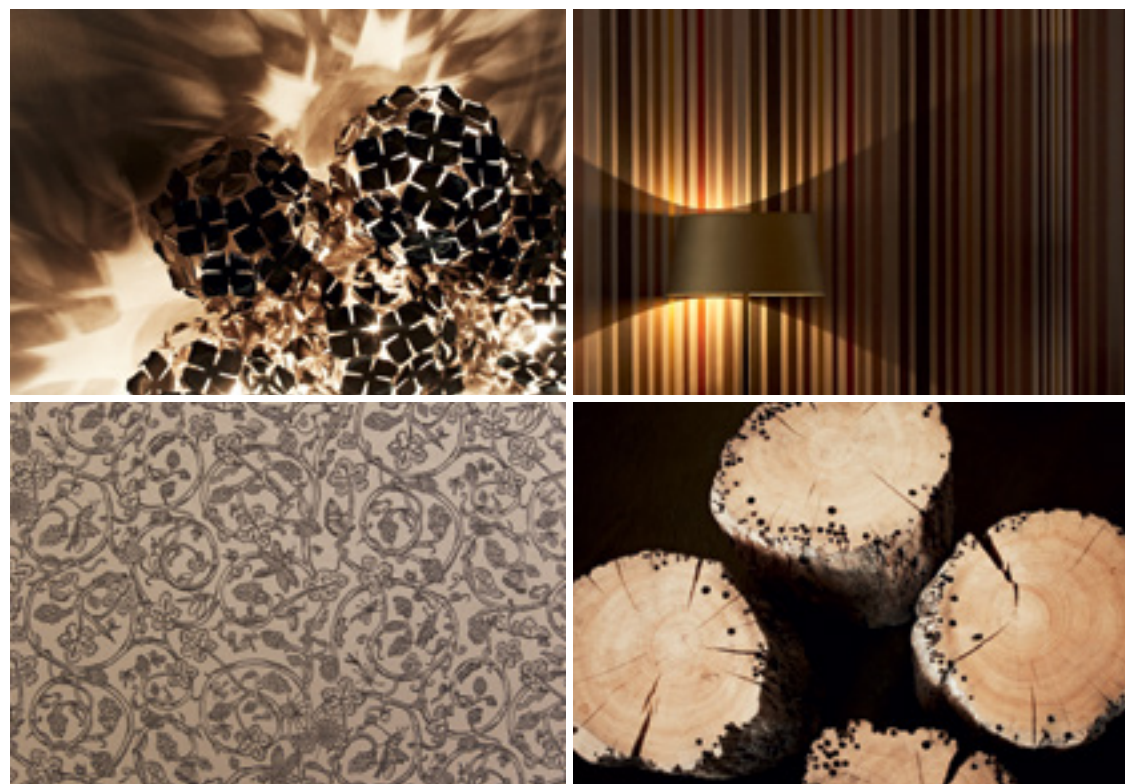
Come and allow us to pamper you. We look forward to your visit!

Waldhotel Stuttgart





LOBBY AND RECEPTION



THE TOPIC OF THE FOREST IS REFLECTED IN THE DESIGN



Arrive, breathe a sigh of relief, feel at home!

From the very first moment, you will sense that you are a long way away from stress and hustle and bustle at Waldhotel Stuttgart. This is attributable to our unique location amidst nature and the fact that we try to make your stay as relaxed as possible – irrespective of whether you are visiting our hotel as a private individual or on business.

And if a wander around the city or a trip to a museum or trade fair should take your fancy: Stuttgart city centre, the exhibition centre and also the airport are just a stone's throw away and easy to reach.



THE LANDSCAPED GROUNDS WHICH COVER MORE THAN ONE HECTARE AND THE HOTEL'S OWN CHILDREN'S PLAYGROUND



THE SUN TERRACE for wonderful culinary experiences in the open air



Greet the morning!

You will only start off the new day with a spring in your step if you have slept well. This is why we have not only attached great value to design but also, and above all, to comfort in furnishing our rooms and suites. At Waldhotel Stuttgart, you can choose between standard, classic, comfort or superior rooms or decide on a suite. Whatever your choice, all of our rooms are equipped with exclusive box-spring beds with mattresses from Tréca to ensure you have a relaxing night's sleep.

All of our rooms are equipped with a flat screen TV, a safe, an individually controllable air conditioning system and tea and coffee making facilities. Internet access is, of course, free of charge, as are cooled and room temperature drinks. For families, we offer family rooms with a connecting door; a baby-sitter is available on request. Your dog is also more than welcome at our hotel – after all, our location is perfectly suitable for walks.

Each room is lovingly designed in a contemporary style with high-quality natural materials and is decorated with an individual piece of art from the “Waldrausch” opus by Stuttgart artist Christa Winter.

So after a relaxing night, breathe in our fresh Degerloch forest air; refresh yourself under the rain shower in the natural stone and marble bathroom and look forward to an eventful day.





STANDARD QUEEN, KING UND TWIN

Even our smallest rooms measure 17 to 20 square metres and offer a view of the directly adjacent forest, the planted inner courtyard or the sports facilities. Our standard category rooms all offer bathrooms illuminated by natural lighting with glass and natural stone. A kettle is available for making tea and coffee.





CLASSIC KING Measuring 22 to 31 square metres, our classic rooms are located in the historic, listed part of the building and in the Lindenzentrum situated at the centre of the grounds. Soft carpets, marble bathrooms illuminated by natural lighting and individual designer wallpaper impart a very special charm. Certain of the rooms are equipped with a kitchenette, making them outstandingly suitable even for long stays – as of ten successive nights, we offer our guests separate long-stay rates.



COMFORT KING/TWIN Measuring up to 25 square metres, our comfort category rooms are located in the new building constructed in 2011. Situated facing the planted inner courtyard, the restaurant, reception and the fitness and sauna area are only located a stone's throw away. The rooms all offer bathrooms illuminated by natural lighting with frosted glass and natural stone, and are additionally equipped with a Nespresso coffee machine.

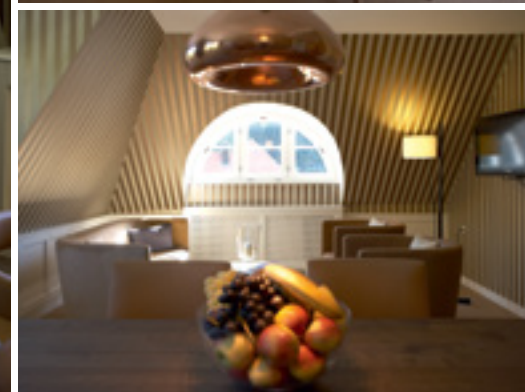




SUPERIOR KING/TWIN Measuring up to 27 square metres, the superior rooms located in the new building constructed in 2011 all boast a furnished balcony overlooking the forest or a terrace with direct access to the garden as well as bathrooms illuminated by natural lighting with frosted glass and natural stone. The rooms are additionally equipped with a Nespresso coffee machine. A bath robe and slippers for your visit to the quickly reached fitness and sauna area are ready and waiting for you at all times.



JUNIOR SUITE Measuring 50 square metres, our junior suite offers an open-plan living and sleeping area plus a free-standing bath tub. It is partly equipped with extremely high-quality English carpet and partly with marble flooring. A bath robe and slippers, the daily newspaper and a culinary greeting to welcome you are just some of the amenities awaiting guests in our two suites.



SUITE Measuring 55 square metres, the suite offers a separate living and sleeping area with kitchenette and can therefore also ideally be used for meetings and long stays. The living and sleeping area is fitted with extremely high-quality English carpet and impressive, striped designer wallpaper. Direct natural light shines through the windows in the marble bathroom, which is equipped with a shower and marble bath. Our two suites are located in the listed, historic part of the building and can be combined to form a 125-square metre master suite offering space for up to six persons.

Breakfast like a king...

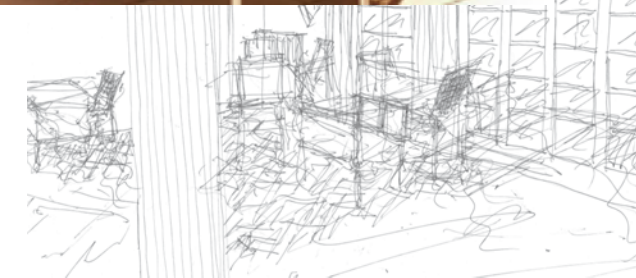


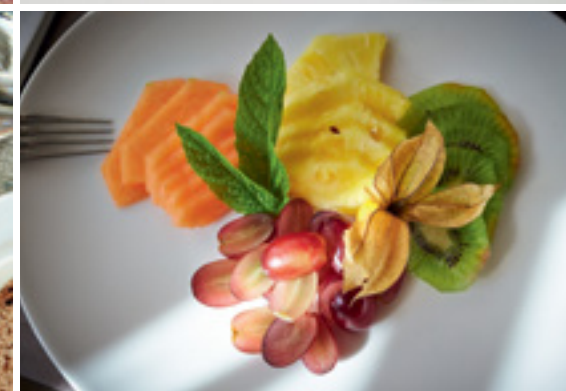
... at our sumptuous breakfast buffet. There is far more on offer here than just Swabian “Weckle” and “Gsälz” – which translates as rolls and jam: fruit, freshly-squeezed juices, cereals, fresh croissants, egg dishes in a number of variations – always prepared à la minute for you, of course. The right breakfast is available for every taste here. Naturally, the tea or coffee is always served freshly prepared according to your wishes.

Our lunch menu offers both Swabian classics and small dishes, freshly prepared using mainly regional ingredients. So take a seat in our light-flooded restaurant or, if the weather is nice, on the terrace. Bon appetit!



DAYTIME RESTAURANT AND SUN TERRACE





SEASONAL, FRESHLY PREPARED DISHES

Celebrations never to be forgotten!

There is a great deal to celebrate in life. A milestone birthday, a christening, a confirmation or communion or a wedding – events to be shared with your loved ones. With its stylish ambience, Waldhotel Stuttgart is the ideal location for this. Festivities that will be remembered for a long time to come can be celebrated here!

You can choose precisely the right facilities to suit your occasion and the number of guests at Waldhotel Stuttgart: from the large ballroom, which can also be subdivided and opened up to the terrace, and the “Lindensaal”, which is set in an idyllic location in the garden, to our historic “Elsässer” room. Our experienced event team will plan each and every detail with you, from the dishes – whether you require a 6-course menu or buffet – and the desired layout of the tables and seating up to and including the decoration. And our beautiful landscaped garden offers the perfect backdrop for a stand-up reception beneath blue skies.





Area*:	175 m ²
Height:	2.9 m
Reception with stand-up tables:	150 persons
Banquet with dancing:	80 persons
Banquet without dancing:	100 persons

* The ballroom can be divided into 105 and 70 m²



OUR BALLROOM

Area:	117 m ²
Height:	2.8 m
Reception with stand-up tables:	60 persons
Banquet with dancing:	40 persons
Banquet without dancing:	50 persons



OUR “LINDENSAAL” WITH SEPARATE TERRACE





Area:	46 m ²
Height:	2.9 m
Reception with stand-up tables:	–
Dinner table:	22 persons



OUR "ELSÄSSER" ROOM

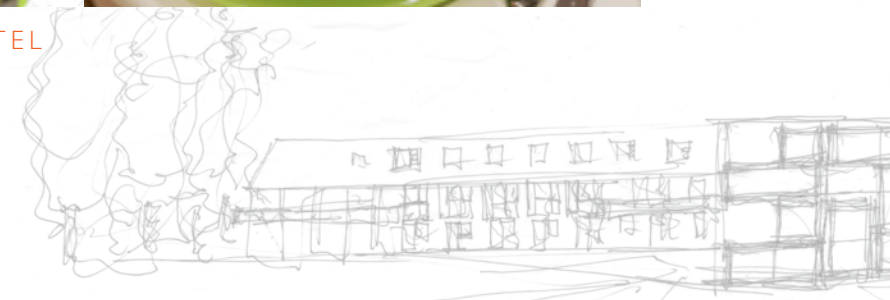
The most beautiful day in your life



For bridal couples, we offer our Waldhotel wedding package plus a number of optionally available extras so that no desire is left unfulfilled at your dream wedding. For example, we produce your wedding cake according to your wishes and decorate your wedding dinner tables festively with candelabra and stylish flower arrangements. In beautiful weather, you can enjoy an aperitif on the terrace and in our "Lindensaal", and open-air weddings are also possible and in the garden. After a lavish celebration, your guests can spend a relaxed night with us – free overnight accommodation with VIP treatment is available for the bridal couple in one of our superior rooms. We have compiled all of the relevant details for you in a dedicated wedding folder.



WEDDINGS AT THE WALDHOTEL



Work takes up half of our lives...



... which is why we attempt to make this half as pleasant as possible for you. Here, conferences, seminars and training courses take place in perfectly equipped conference rooms flooded with daylight – from the 175-square metre ballroom to smaller seminar rooms. To meet your individual requirements, choose the appropriate solution from one of our three conference flat-rates. Our experienced team is on-hand for you and will help to make sure that everything proceeds smoothly, from a discrete meeting to a major event. Both our garden, the climbing centre and the high rope course located in the immediate vicinity have proved very popular for incentives and team building!

Area*:	175 m²
Height:	2.9 m
Theatre seating:	120
Classroom seating:	80
U-shape seating:	40
Block seating:	50

* The ballroom can be divided into 105 and 70 m²

Area*:	117 m²
Height:	2.8 m
Theatre seating:	60
Classroom seating:	32
U-shape seating:	26
Block seating:	28



CONFERENCES IN THE BALLROOM AND THE “LINDENSAAL”, INCENTIVES IN THE GARDEN



OUR CONFERENCE ROOMS K2 (TOP), K1 (TOP RIGHT) AND THE “ELSÄSSER” ROOM

Area:	53 m²
Height:	2.7 m
Theatre seating:	30
U-shape seating:	15
Block seating:	16

Area:	41 m²
Height:	2.7 m
Theatre seating:	20
U-shape seating:	12
Block seating:	10



Area:	46 m²
Height:	2.9 m
Block seating:	16

Active recuperation – take on new energy



Sports fans' tastes are met in every regard at Waldhotel Stuttgart. Here, you can jog through the adjacent forest, put yourself through your paces at the nearby climbing centre or play a game of tennis on the hotel's own Rebound Ace hard tennis court. Thanks to our co-operation with TopTennis Stuttgart, you can also train with professional ATP coaches here. Our sauna and fitness area, with a view of the grounds, is the ideal location to take on new energy.

Here, you can train in a relaxed atmosphere on the latest TechnoGym equipment, relax in the steam bath, the outdoor sauna or sanarium or enjoy a massage. In good weather, you can then rest amidst birdsong on the outdoor terrace, which is shielded from view.



THE TENNIS COURT PLUS THE SAUNA AND FITNESS AREA



OUTDOOR TERRACE AND INDOOR RESTING AREAS



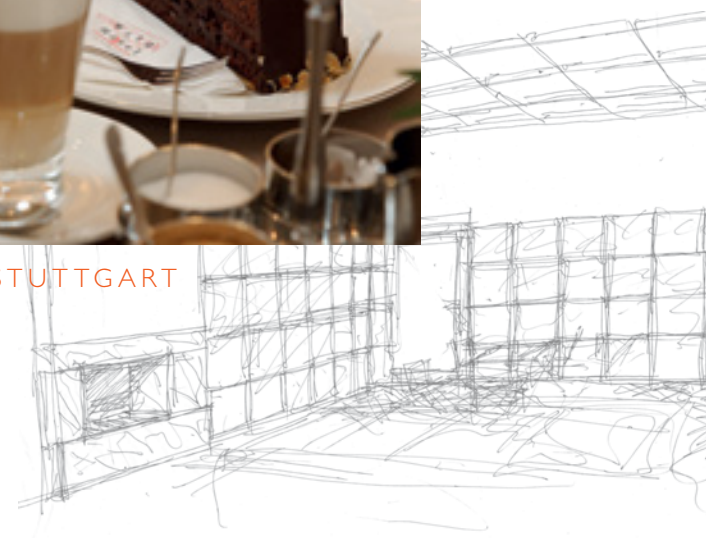
Passion for freshness



Our cuisine is based on a clear recipe for success: top ingredients, the majority of which come from the region, from sustainable and controlled cultivation and farming, lots of organic produce, fresh herbs from our own herb garden, no additives and also lactose- and gluten-free products on request. Above all, however, always freshly prepared for you – irrespective of whether you dine in our Finch restaurant or enjoy our buffets or a snack at events or celebrations. Even our ice cream and our sorbets are home-made by our patisserie chefs, as are the fruit cakes, gateaux and petits fours. You will be thrilled by the delicacies that our chef de cuisine and his team conjure up for you.



THE KITCHEN AND PATISSERIE AT WALDHOTEL STUTTGART





CULINARY EVENTS ON THE SUMMER TERRACE

Gusto with tradition

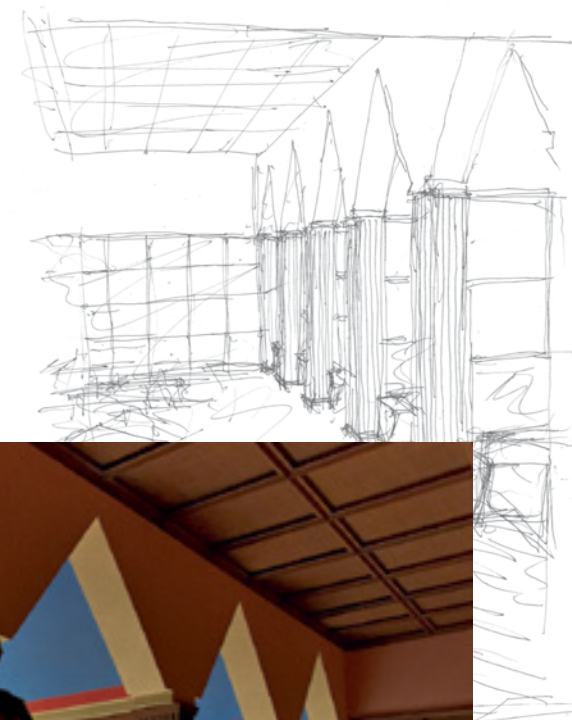


Our Finch restaurant is located in the oldest, listed, part of our hotel. The former summer house, built in around 1910, has been painstakingly restored. The original coffered wooden ceilings and the historic window niches – especially popular tables for four persons – have been lovingly preserved. The name of our restaurant is taken from the finch; its illustration, in combination with our name, symbolises our proximity to the forest.

Our restaurant is small enough to be cosy and large enough to accommodate long dining tables. An open chimney additionally ensures a relaxed atmosphere. Therefore, allow us to pamper you with our delicious dishes, appropriate wines – including regional products – and digestifs from regional distilleries.



OUR À-LA-CARTE FINCH RESTAURANT



THE HISTORIC WINDOW NICHES IN THE FINCH

Cheers, zum Wohl, santé!



Stylish lounge chairs, an illuminated onyx bar and elegant, striped wallpaper that reflects the forest motif – our bar is a real sight for sore eyes. Above all, however, you can draw the day to a cosy close around the open fireplace in the company of head barman Angelo Gregorio and his team. He will be happy to serve you fine wines or a cold beer. He will, of course, also mix you classic cocktails and long drinks or delicious alcohol-free drinks – the drinks list also offers a refined selection of whisky, rum and gin specialities as well as fine distilled liquors – often to the accompaniment of live piano music at weekends.

Our hotel bar is also very popular for occasional culinary events such as e.g. whisky tastings or football and tennis matches broadcast on Sky Sports.





Poetic modern – the architectural concept



“Poetic modern” are the words used to describe the architectural concept according to which renowned Munich-based architect André S. Behncke has redesigned and extended the Waldhotel in Stuttgart-Degerloch. Whether it be the lobby, the restaurant, the rooms or suites: the interior architecture is oriented towards the experience of nature and transposes the proximity to the directly adjacent forest into a contemporary experience full of poetic elements.

In the age of “sampling”, Behncke has consciously intensified this focus on nature with references to contemporary art/music/fashion and design flows to such an extent that – as in the case of a good work of art – the visitor is able to read a variety of layers of the complex sensory and image language. The wallpaper in the “Lindensaal”, for example, into whose discrete, floral pattern spiders and other small, eerie forest inhabitants are “woven”, is an ironic and witty manner of dealing with traditional patterns for hotel visitors caught up in contemporary activities. For clientele merely looking for a cosy hotel, however, the wallpaper simply has a lovely, old-fashioned, floral pattern at first glance.

During his training, Dott. Arch. André Behncke gained experience in a wide variety of areas over a period of ten years in major national and international projects. Since this time, he has been dealing intensively with the topic of “hotel/hospitality”. His trademark is a holistic approach that amalgamates the architecture and interior design, also encompassing the design of furnishings, lamps, carpets, etc., as at Waldhotel Stuttgart.



“Mood boards” translate poetic elements into materials and application examples



STUTTGART AND ITS SURROUNDING AREA *Stuttgart has a great deal to offer. From the television tower and the GAZI sports stadium in the neighbourhood to attractive destinations in the city centre. A visit to the Mercedes-Benz museum or the Porsche museum is well worthwhile for car enthusiasts, whilst the museum of art, the state gallery, the opera or the newly constructed library offer sights for those interested in culture. For culinary impressions, we recommend a walk through the market hall or over the Christmas market during the advent period. Ask our reception staff for excursion tips – they will be more than happy to advise you and compile an individual tour for you!*

The Waldhotel team



Our Waldhotel team is not only on-hand to welcome you on arrival but accompanies you whilst you are our guest. Committed but discrete, we can virtually sense your wishes and, irrespective of whether it be the kitchen staff, the events team or our housekeepers, our entire team will do everything in their power to make sure that your stay with us is to your complete satisfaction.





Hotel manager and financial controller
Alexander Swoboda



Sales and deputy hotel manager
Andrea Jesumann, deputy marketing
manager Madeleine Mannerfelt



Head of personnel Claudia Deisen-
roth, financial accounting employee
Jeniffer Michel



Booking employee Diana Stephani,
revenue manager Christin Seke



Caretaker Kastriot Kovani, technical
manager Dragan Cuvalo



Senior event assistant Anja Schneider,
event manager Silke Marquardt

Reception and booking manager
Vera Hellermann, deputy reception
manager Silvia Wütherich



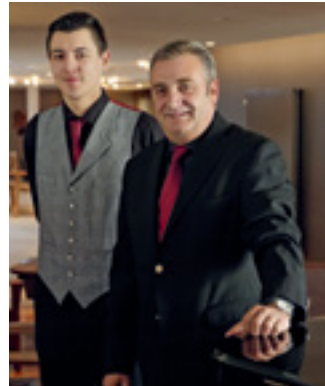
From left to right: Banquet manager
Wolfgang Schwoon, restaurant manager
Judith Ruopp, head of gastronomy
Holger Klotz



Bar employee Massimo Grasso,
head barman Angelo Gregorio



Sous chef Bernd Ebert,
chef de cuisine Arne Kühnle



Housekeeper Sara Hohlfeld

... AND HERE'S HOW TO GET TO WALDHOTEL STUTTGART

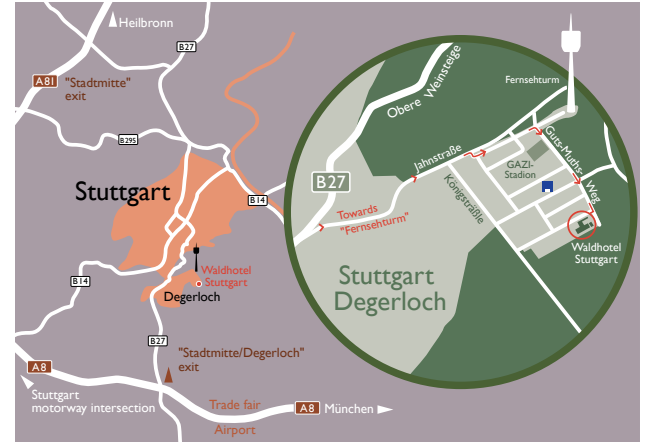
Waldhotel Stuttgart is located in the vicinity
of Stuttgart airport and the exhibition centre
(10 minutes) as well as Stuttgart city centre
(15 minutes).

Arriving by public transport

From the main station, take line U 7 to the
Waldau station or line U 15 to Ruhbank/
television tower. It is approximately 5 minutes'
walk from the station to Waldhotel Stuttgart.

Arriving by car

From the south via the A8 motorway, Stutt-
gart-Degerloch exit (No. 52), to Degerloch in
the direction of the city centre, then keep going
in the direction of the television tower. From
the north via the A 81 motorway, Stuttgart city
centre exit (No. 17) to the main station. Then
in the direction of Degerloch/television tower.
40 free parking spaces as well as a chargeable
underground garage with 2 charging stations for
electric vehicles are available in front of the hotel.





Waldhotel Stuttgart GmbH
Guts-Muths-Weg 18 · D-70597 Stuttgart-Degerloch
Tel. +49(0)711 18572-0 · Fax +49(0)711 18572-400
www.waldhotel-stuttgart.de · www.facebook.com/waldhotelstuttgart
info@waldhotel-stuttgart.de